



Wall Cupboards

Installation and safety instructions

IMPORTANT

Save these instructions for reference

The guide includes:

- Instructions and warnings for the safe use of your Wall Cupboards
- Configuration guide
- Installation instructions
- User guide



Find your top and base combination.

Cupboards arrive in two fully assembled units. Use the table below to configure your cupboards correctly.

N925

Display Cupboard
124 cm



N912
Display Cupboard
top 124 cm

N907
Cupboard base
124 cm

N926

Display Cupboard 124 cm,
tote base



N912
Display Cupboard
top 124 cm

N908
Tote storage
base 124 cm

N927

Display Cupboard 124 cm,
adjustable base



N912
Display Cupboard
top 124 cm

N905
Storage base,
adjustable 124 cm

N928

Display Cupboard 124 cm,
fixed base



N912
Display Cupboard
top 124 cm

N906
Storage base,
fixed 124 cm

N913

Display Cupboard
94 cm



N910
Display Cupboard
top 94 cm

N904
Cupboard base
94 cm

N914

Display Cupboard 94 cm,
tote base



N910
Display Cupboard
top 94 cm

N903
Tote storage
base 94 cm

N915

Display Cupboard 94 cm,
adjustable base



N910
Display Cupboard
top 94 cm

N902
Storage base,
adjustable 94 cm

N916

Display Cupboard 94 cm,
fixed base

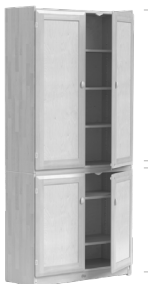


N910
Display Cupboard
top 94 cm

N901
Storage base,
fixed 94 cm

N917

Storage Cupboard
94 cm



N911
Storage Cupboard
top 94 cm

N904
Cupboard base
94 cm

N918

Storage Cupboard 94 cm,
tote base



N911
Storage Cupboard
top 94 cm

N903
Tote storage
base, 94 cm

N919

Storage Cupboard 94 cm,
adjustable base



N911
Storage Cupboard
top 94 cm

N902
Storage base,
adjustable 94 cm

N920

Storage Cupboard 94 cm,
fixed base



N911
Storage Cupboard
top 94 cm

N901
Storage base,
fixed 94 cm

N921

Bookcase 94 cm,
cupboard base



N909
Bookcase top
94 cm

N904
Cupboard base
94 cm

N922

Bookcase 94 cm,
tote base



N909
Bookcase top
94 cm

N903
Tote storage
base, 94 cm

N923

Bookcase
94 cm



N909
Bookcase top
94 cm

N902
Storage base,
adjustable 94 cm



Product guide

Wall Cupboards

IMPORTANT

Save these instructions for reference

Recommended use

Wall cupboards are designed specifically for childcare settings and provide a range of suitable storage and display options for use by both educators and children.

WARNING

- ▲ Tip-over hazard. Cupboards must be placed against and fastened securely to a wall. Failure to do so risks serious injury or death.
- ▲ Children must be supervised and prevented from climbing on the cupboards.

CAUTION

- ▲ Do not store items on top of the cupboards.
- ▲ Keep children away when lifting heavy items from a high shelf.

Assembly and wall attachment

Each cupboard arrives in two sections with a base and top unit packaged separately. Units contain captive hardware and are fixed together during installation with the supplied 4 mm hex tool. The cupboards must be attached to the wall using the supplied brackets. Hardware is provided to attach the brackets to the cupboard top, but wall mounting hardware should be chosen by the user as appropriate to the wall construction.

The same 4 mm hex tool can be used to adjust levelling feet on each corner of the base unit. Follow the detailed installation instructions on following page.

WARNING

- ▲ To ensure all steps are completed correctly, the installation procedure described below must be performed by a **competent tradesperson**.

Operation:

See User guide on following page.

Cleaning

Wooden parts: wipe with a damp cloth and mild detergent. Do not use excessive water.

For all plastic parts, dust with a soft, damp cloth or chamois. Wash with dishwashing detergent and plenty of lukewarm water.

Use care in cleaning mirrors to avoid surface abrasion.

Construction

Cupboards are made of solid birch panels with mortise and tenon joinery fastened with screws and protected with a durable child-safe finish.

Doors are solid birch frames with hardwood plywood panels, protected with a child-safe finish and are attached with pinch-free hinges.

Whiteboards are enamelled steel.

Fastening hardware is either brass or plated steel.

Mirror backs are made from 3 mm acrylic with hook and loop fastener strips.

User modifications

We recognise that some users might benefit from modifications made in the field. However, we cannot be responsible for modifications made by customers to our products, without our supervision, testing or evaluation.

Ordering parts

To order replacement parts, contact customer service with a description of the part(s) needed and the ID code from the product.

Use only replacement parts supplied by Community Playthings.

If your shipment is incomplete, please call customer service.

All our packaging is recyclable (cardboard and LDPE).

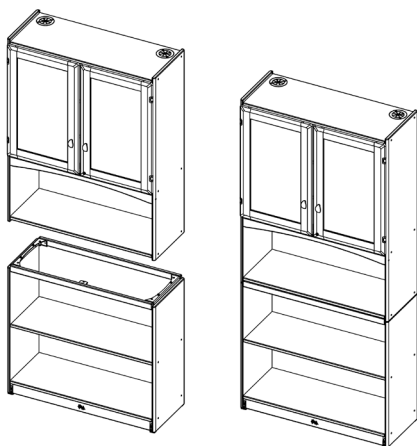


Installation instructions

Wall Cupboards

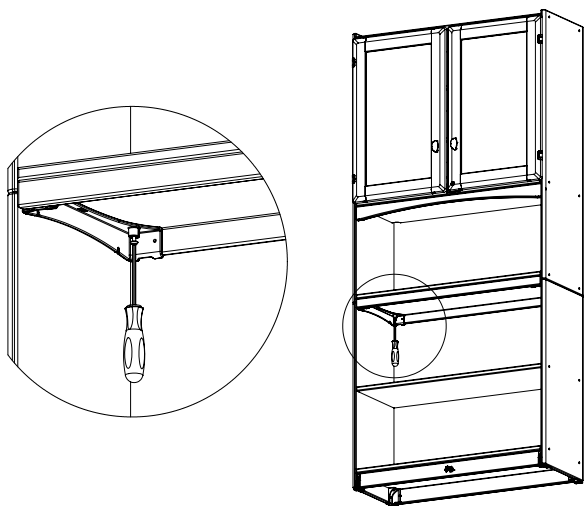
1. Assemble the top and base units

Lift and position the top unit in place onto the base unit (requires two people capable of lifting 30 kg each).



2. Lock the units together

Using the supplied 4 mm hex tool, tighten five (5) screws to fix the top and base together.

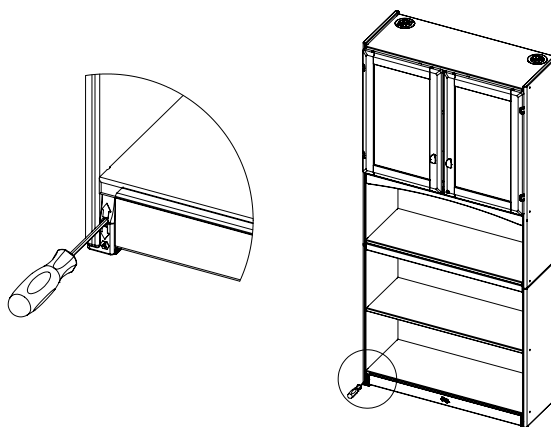


WARNING

- ▲ Hidden stability hazard: Tighten the screws immediately once the units are together. This step must not be missed!

3. Level the base

With cupboard in final position, use the supplied 4 mm hex tool to adjust the corners so the cupboard sits squarely on the floor. Each corner adjusts individually: clockwise to raise, anticlockwise to lower (cupboard must be pulled away from wall temporarily to access the rear corner levellers). The levelling corners can also be used to align the tops of the doors if your floor is not level.

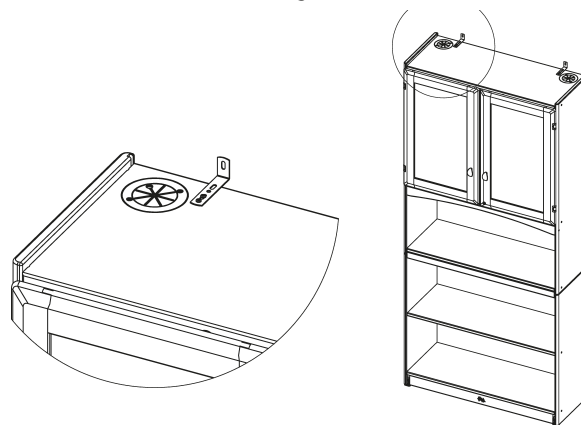


4. Attach to wall

Use the supplied screws and Torx screwdriver bit to attach the two angle brackets to the top of the cupboard. Start with a single screw in one of the longer slots. (This allows the bracket to be moved aside if you need to drill a hole into the wall for a wall plug.) Choose a fastener appropriate to your type of wall construction (not supplied) to attach the short leg of the bracket to the wall. Then add the second supplied screw through each bracket into the top of the Wall Cupboard.

WARNING

- ▲ It is essential that the correct fastener is chosen to provide a strong connection between the mounting bracket and the wall!





User guide

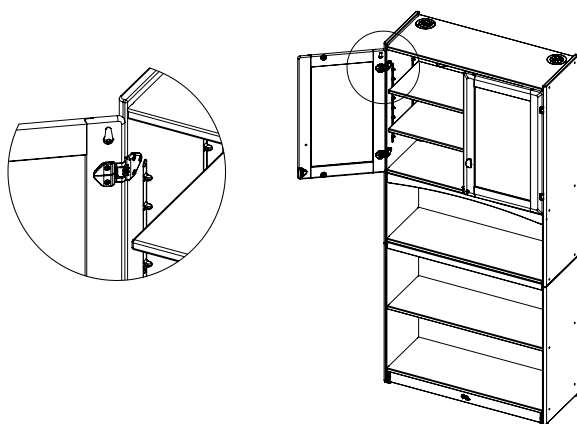
Wall Cupboards

Locks and keys

All doors are equipped with a key lock for additional security, and magnetic catches to hold them closed when the locks are open.

Convenient key hooks are provided inside each top door for when the doors are unlocked or to store extra keys.

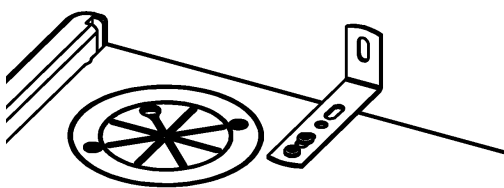
All locks are keyed alike for simple key management.



Cable management

Each cupboard includes two cable grommets in the top corners large enough to pass a power plug through whilst holding the cord towards the back corners of the cupboard.

In addition, notches in the vertical partitions and lower shelf allow smaller power cords to be passed through.



The cable management in conjunction with the optional Vertical divider shelf enables a range of options such as tablets being stored and charged in place. A place for a landline phone in the open centre

compartment, or over-cabinet lighting to illuminate the display area may also be considered.

WARNING

- ▲ Use only safe, approved electrical components.
- ▲ Provide adequate air space around equipment during charge cycles to prevent overheating and keep flammable items clear.

Whiteboard

A magnetic whiteboard is included on the inside left door on the Display Cupboard top units. Notes can be written directly on the whiteboard or attached with a magnet. Door can then be locked for confidentiality.

Accessories

Display Cupboard mirror:

An optional mirror is available as an accessory. Comes in two sizes: 94 cm and 124 cm to enhance the display area of Display Cupboards. The mirror attaches with included self-adhesive hook and loop strips; instructions are included with each mirror.

Vertical divider shelf:

An optional accessory for the Display Cupboard 124 cm. Like the other adjustable shelves, it can be placed at any height on the built-in shelf supports. It may be used with vertical dividers protruding downwards or upwards.

